

# Observational Study to Evaluate the Correlation among Left Ventricular Ejection Fraction and Serum Uric Acid Level in Type 2 Diabetic Patients with Diastolic Heart Failure

Rajeev Ranjan

Consultant Physician, Chest Clinic, Chapra, Bihar, India

## ABSTRACT

**Objective:** The main objective of this study is to evaluate the correlation among left ventricular ejection fraction and serum uric acid level in type 2 diabetic patients with diastolic heart failure.

**Methods:** This was a retrospective study which was conducted at a tertiary out patients department clinic in Bihar. Patients' data were recorded from the patients OPD chart, clinical reports and mainly from the clinical records maintain at the investigation centres. Demographic data were collected by using predesigned proforma in Microsoft excel sheet and serological test data were noted from patient clinical record sheet.

**Results:** It was observed that 70% of patients were having ejection fraction less than 40 along with serum uric acid level bellow 6.8 mg/dl where as 30% had high uric acid levels with ejection fraction >40. The difference between this two category was statistically significant (P=0.001). It is observed that in patients with heart failure poor prognosis is associated with high uric acid and it is statistically significant, p = 0.001

**Conclusion:** Low levels of ejection fraction are significantly correlated with the high levels of serum uric acids. This study also concludes that in diabetic heart failure uric acid is an important prognostic factor.

**Keywords:** Diabetes, uric acid level, ejection fraction, diastolic heart failure.

## INTRODUCTION

The combination of hyperglycemia, hypertension, obesity, dyslipidemia and

atherosclerosis that is seen commonly with diabetes mellitus increases the risk of systolic and diastolic left ventricular (LV) dysfunction and often leads to heart failure in diabetic patients, this explains the more common occurrence of this syndrome in diabetic patients [1-4]. In the United Kingdom Prospective Diabetic Study (UKPDS), the incidence of heart failure correlated with the extent of hyperglycemia, each 1% increase in hemoglobin A1c (HbA1c) levels was associated with a 12% increase in heart failure risk [5]. Several pathophysiologic mechanisms seem to be responsible. Diabetes is a risk factor for the development of coronary atherosclerosis with resultant myocardial ischemia and infraction, diabetes is associated frequently with the presence of hypertension, a factor in the pathogenesis of approximately 70% of all heart failure cases, and diabetes causes the development of a specific diabetic cardiomyopathy independent of the presence of coronary atherosclerosis that results from the metabolic derangements that are present in diabetes [6]. Thus, diabetes mellitus is a major population attributable risk factor for the development of heart failure.

Heart failure is not a diagnosis but is a clinical syndrome that results from progression of cardiomyopathy, which is defined simply as disease of heart muscle. Diabetes produces adaptive and maladaptive myocardial responses, altered metabolism and impaired insulin action in heart and

skeletal muscle are cause and consequences of altered cardiac function [8]. Diabetes mellitus together with hypertension and associated comorbidities, produces structural damage in the heart that manifests as ventricular dysfunction, and ultimately, as diastolic heart failure [9].

The main objective of this study is to evaluate the correlation among left ventricular ejection fraction and serum uric acid level in type 2 diabetic patients with diastolic heart failure.

## METHOD

This was a retrospective study which was conducted at a tertiary out patients department clinic in Bihar. Patients' data were recorded from the patients OPD chart, clinical reports and mainly from the clinical records maintain at the investigation centres. Any patients who were diabetic and having documented heart failure were included in this study. Patients who were fails to maintain their clinical reports, discontinued their treatment for any reason and the patients who denied to participate in the study were excluded. Study also excludes pregnant women, minors and patients with chronic kidney disease, Cardiomyopathies, Valvulopathies, Gout or any autoimmune disease.

For those patients who fulfils the inclusion criteria a sign informed consent were obtained.

Demographic data were collected by using predesigned proforma in Microsoft excel sheet and serological test data were noted from patient clinical record sheet.

Microsoft excel sheet were used to collect the data thereafter with help of SPSS 22.0 data were analysed. A descriptive bivariate analysis was performed; for the chi-squared distribution, significance was assumed to be <0.05.

## RESULT

170 patients' data were evaluated in this retrospective observational study. This study population further categorized based on age distribution, gender distribution, influence on serum uric acid and NYHA classification.

Table 1: Age Distribution of the study populations

Age distribution	N (%)
40 – 50	55 (32%)
51- 60	65 (38%)
61 – 70	37 (22%)
71 - 80	11 (7%)
> 80	2 (1%)

Table 2: Gender Distribution

Sex	Number of patients
Female	72
Male	98

Table 3: Distribution based on NYHA

NYHA Class	N (%)
I	24 (14%)
II	74 (44%)
III	55 (32%)
IV	17 (10%)

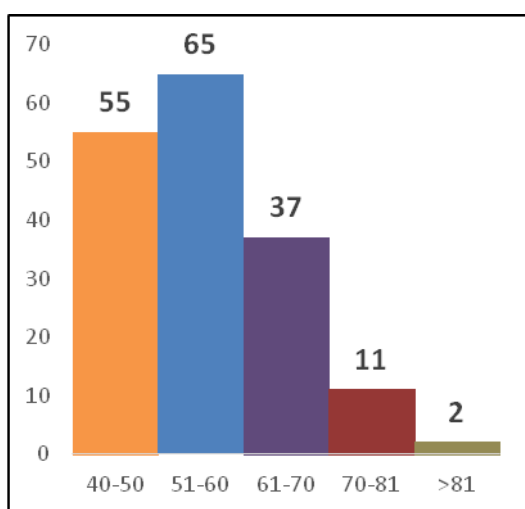


Figure 1: Age Distribution of the study populations

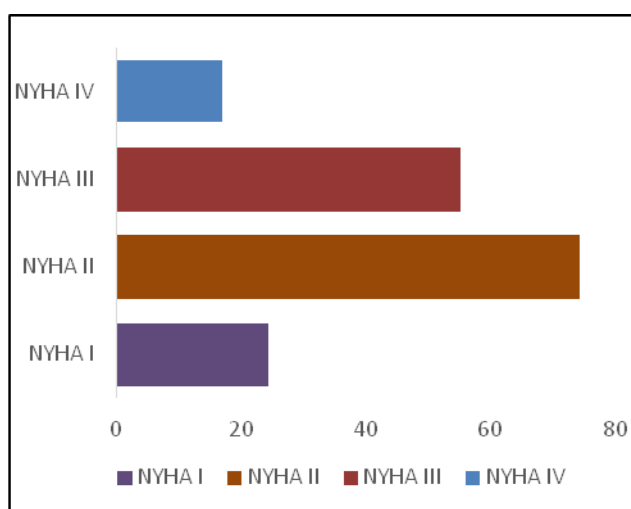


Figure 2: Distribution based on NYHA

**Table 3: Distribution of Uric Acid level**

Uric Acid Level (mg/dl)	N (%)
> 6.8	97 (57%)
< 6.8	73 (43%)

It was observed that 70% of patients were having ejection fraction less than 40 along with serum uric acid level bellow 6.8 mg/dl where as 30% had high uric acid levels with ejection fraction >40. The difference between this two category was statistically significant (P=0.001).

**Table 5: Correlation between EF and serum uric acid**

Uric Acid Level (mg/dl)	Ejection Fraction N (%)		Overall N (%)
	< 40	> 40	
< 6.8	22 (30%)	51(70%)	73 (43%)
> 6.8	68 (70%)	29 (30%)	97 (57%)

It is observed that in patients with heart failure poor prognosis is associated with high uric acid and it is statistically significant, p = 0.001.

**Table 6: Correlation between Uric Acid and Prognosis**

Prognosis	Serum uric acid N (%)		Overall N (%)	P Value
	< 6.8	> 6.8		
Dead	3 (4.1%)	22(22.7%)	25 (14.7%)	0.001
Alive	70 (95.9%)	75(77.3%)	145 (85.3%)	

## DISCUSSION

The clinical manifestations of diabetic heart disease include atherosclerosis and ischemic cardiomyopathy, diabetic cardiomyopathy and diabetic autonomic neuropathy, the pathophysiologic process includes macrovascular disease. Microvascular disease, myocellular hypertrophy and fibrosis, and autonomic nerve fibre degeneration. Although the macrovascular component atherosclerosis generally receives the greatest attention, it represents only one component of the cardiovascular disease process that is caused by diabetes mellitus. Cardiovascular disease, including coronary artery disease, cerebrovascular disease, and peripheral vascular disease, is the most common cause of death in diabetic patients, most deaths result from coronary artery disease<sup>[10]</sup>.

Significant association between left ventricular ejection fraction and serum uric acid was revealed in current study which was in agreement with the study by Deveci et al<sup>[11]</sup>. In current study it was observed

that 70% of patients were having ejection fraction less than 40 along with serum uric acid level bellow 6.8 mg/dl where as 30% had high uric acid levels with ejection fraction >40. The difference between this two category was statistically significant (P=0.001). This findings was in line with the findings of some previous studies<sup>[12,13]</sup>.

Diabetic cardiomyopathy encompasses the spectrum from subclinical disease to the full blown syndrome of diastolic heart failure. The prevalence of type 2 diabetes mellitus is increasing at an alarming rate in the western world, and with it, the frequency of diabetes related heart failure. There is at least early suggestion that target driven, long term, untensified intervention that is aimed at multiple risk factors in patients who have type 2 diabetes and microalbuminuria may reduce the risk of macrovascular (cardiovascular) and microvascular complications by approximately 50%<sup>[14]</sup>. Thus, it is imperative that patients, particularly those who are at risk for the cardiovascular dysmetabolic syndrome, be screened aggressively for the presence of glucose intolerance and diabetes. When detected, all metabolic and cardiovascular parameters should be evaluated and treated aggressively to reach currently recommended clinical targets.

## CONCLUSION

Low levels of ejection fraction are significantly correlated with the high levels of serum uric acids. This study also concludes that in diabetic heart failure uric acid is an important prognostic factor.

## REFERENCES

1. Kannel W.B. McGee DL. Diabetes and cardiovascular disease: the Framingham Study. JAMA. 1979;241:2035-8.
2. Kirpichnikov D, McFarlane SI, Sowers JR. Heart failure in diabetic patients: utility of beta-blockade. J Card Fail 2003;9:333-44.
3. Massie BM. Obesity and heart failure – risk factor or mechanism? N Engl J Med 2002; 347:358-9.

4. Sowers JR, Epstein M, Froehlich ED. Diabetes, hypertension and cardiovascular disease: can update. *Hypertension* 2001; 37(4):1053-9.
5. Stratton IM, Adler AI, Neil HA, Matthews DR, Manley SE, Cull CA, et al. Association of glycemia with macrovascular and microvascular complications of type 2 diabetes (UKPDS 35): prospective observational study. *BMJ* 2000;32;405-12.
6. Sander GE, Giles TD. Diabetes mellitus and heart failure. *Am Heart Hosp J* 2003;1:273-80.
7. Amato I, Paolisso G, Cacciatore F, Ferrara N, Ferrara P, Canonico S, et al. Congestive heart failure predicts the development of non insulin dependent diabetes mellitus in the elderly. The osservatorio Geriatrico Regione Campania Group. *Diabetes Metab* 1997;23:213-8.
8. Taegtmeier H, McNulty P, Young ME. Adaptation and maladaptation of the heart in diabetes: Part 1. General concepts. *Circulation* 2002;105:1727-33.
9. Giles TD, Sander GE, Myocardial disease in hypertensive diabetic patients. *Am J Cardiol* 1989;87(6A):23S-8S.
10. Deveci, T., Takeishi, Y., Arimoto, T., Okuyama, H., Nozaki, N., Hirono, O., et al. (2013) Hyperuricemia Associated with High Cardiac Event Rates in the Elderly with Chronic Heart Failure. *Journal of Cardiology*, 47, 219-228.
11. Deveci, O.S., Kabakci, G., Okutucu, S., Tulumen, E., et al. (2010). The Association between Serum Uric Acid Level and Coronary Artery Disease. *ClinPract*, 64, 900–907.
12. Leyva, F., Anker, S.D., Godsland, I.F., Teixeira, M., Hellewell, P.G., Kox, W.J., et al. (1998) Uric acid in Chronic Heart Failure: A Marker of Chronic Inflammation. *European Heart Journal*, 19, 1814-1822. <https://doi.org/10.1053/euhj.1998.1188>.
13. Mohamed Yasar Arafath S et al. Correlation between Serum Uric Acid Level and Left Ventricular Ejection Fraction in Patients with Heart Failure. *JMSCR Volume 08 Issue 11 November 2020*.
14. UKPD Study Group. Efficacy of atenolol and captopril in reducing risk of microvascular and microvascular complications in type 2 diabetes. UKPDS 39. *BMJ* 1998;317:713-20.

How to cite this article: Ranjan R. Observational study to evaluate the correlation among left ventricular ejection fraction and serum uric acid level in type 2 diabetic patients with diastolic heart failure. *International Journal of Research and Review*. 2020; 7(12): 257-260.

\*\*\*\*\*